

**INTERNATIONAL AND TROPICAL HEALTH AT THE UNIVERSITY OF QUEENSLAND****Post-graduate coursework Masters degrees in International and Tropical Health  
available in 2008 through the  
School of Population Health, Faculty of Health Sciences, Brisbane, Australia**

The University of Queensland (UQ) has provided Masters coursework degrees in International and Tropical Health for over 20 years in a variety of forms. A major re-organisation of post-graduate coursework teaching in the School of Population Health (SPH) was undertaken in 2005, and which has continued through 2006, to produce a set of stimulating yet relevant courses arranged into various degree options. Coursework degrees related to international and tropical health available in 2006 through the SPH are: Master of International Public Health (MIPH); Master of Public Health (Tropical); and the Master of Public Health with international and tropical health electives. These coursework degrees provide the basic professional training for graduates to work internationally in health departments, with non-government organizations, and with international and bi-lateral aid agencies. From 2007, options are available for: (a) a 24 unit (3 Semesters full-time) Masters for those with a 3 year degree or equivalent as entry criteria, and (b) a 16 unit (2 Semesters full-time) Masters for those with at least a 4 year degree or equivalent.

The international and tropical health courses are supported, in part, by the Australian Centre for International and Tropical Health and Nutrition (ACITHN), a collaboration of the University of Queensland and the Queensland Institute for Medical Research (QIMR), funded through the Australian government's Public Health, Education and Research Program (PHERP).

**Teaching arrangements**

The 24 unit (3 Semester) MIPH, MPH (Tropical) and MPH with international/tropical electives can be completed over 12 months or 18 months full-time for local and international students. The 12 month option includes a Summer Semester with most taught coursework in November-December in block/workshop format. The 16 unit (2 Semester) MIPH, MPH (Tropical) and MPH with international/tropical electives can be completed over 12 months full-time for local and international students, but courses are available from any of the 3 Semesters.

The degrees can be commenced in the March or July Semesters. Part-time options are available for local students. The fees for Masters coursework degrees are comparable to other major Australian universities (Group of 8). The Masters degrees can be completed by coursework (24 or 16 unit degrees), or coursework and Dissertation (24 unit degree only).

There are opportunities for an individual or group research Dissertation in the 24 unit masters which is 1/3 of the degree or 8 units. A Project (4 units) is available in either the 24 unit or 16 unit Masters. Either Dissertation or Project could involve fieldwork in Brisbane, elsewhere in Queensland or Australia, or internationally. UQ has a strong track record in assisting with international fieldwork placements through contacts in the Asia-Pacific region built up over many years, and through on-going international research and service activity. UQ also has connections with institutions across northern Australia.

**Course content**

International or Tropical Masters, or MPH degrees with international/tropical electives, equip students with the knowledge and competencies to contribute to disease control and health promotion across a wide range of

populations and countries. These extend from least developed and post-conflict countries, still afflicted by infection and malnutrition; through middle income countries, experiencing increases in cardiovascular disease, cancer and injuries, in addition to the persistence of a communicable and under-nutrition disease burden; to industrialized developed countries where the major challenges are non-communicable disease although threats from infectious disease persist. In some instances - such as the former USSR – life expectancy has declined from massive increases in cardiovascular disease and injuries, as well as recrudescence of infectious disease. The coursework covers the spectrum of the great transitions in human populations and health: the demographic transition (from high to low fertility and mortality), the epidemiological transition (from infectious disease and under-nutrition to non-communicable disease and injury), the nutrition transition (from energy and vitamin/mineral deficiencies to over-nutrition, obesity and chronic disease), and the accompanying cultural, social and economic transitions associated with development.

The International and Tropical coursework offered by SPH UQ include: epidemiological and demographic analysis; disease control; health systems and policy; culture, sociology and economics; and situational crises. This reflects a multi-disciplinary approach to health and development that integrates the physical environment with the biology of disease and the vagaries of human behaviour – and its socio-economic and cultural determinants. Such an approach requires the application of both the natural and social sciences, using both quantitative and qualitative methods.

### **Locale**

Brisbane is located in South East Queensland and has a sub-tropical climate. It is often described as one of the most livable cities in Australia because of its size, facilities and cost of living. Brisbane is connected within an hour's drive to the beaches of the Gold Coast (Surfers Paradise) to the south, and the Sunshine Coast to the north. Large national parks are within easy access. Queensland is a vast state that extends to the rain forests of the tropical north and the islands of the Torres Strait to within a few kilometers of Papua New Guinea. Queensland includes the Great Barrier Reef off the north-east coast, one of the true natural wonders of the world, accessed from resort towns such as Cairns and Port Douglas. It also; contains large tracts of 'Outback' in the west and north-west of the state, as well as significant agricultural and mining activities.

The School of Population Health (SPH) is located on the Herston Campus of The University of Queensland, not far from the central business district and Chinatown. The SPH is in the Public Health building adjacent to the Medical School, and close to the Queensland Institute of Medical Research (QIMR), and the Royal Brisbane General Hospital, Women's Hospital and Children's Hospital.

## **COURSEWORK**

### ***CORE COURSES***

All MIPH or MPH students undertaking specialized options are required to complete 4 core courses. These courses are: Introduction to Epidemiology, Introduction to Biostatistics, Social Perspectives in Population Health, Health Systems, and Organisation and Management. These courses provide basic knowledge and competencies that all graduates need to acquire, and in some instances, are pre-requisites for other advanced courses (especially Epidemiology and Biostatistics). Most of the core courses are available in both semesters, alternating day and evening. In keeping with the international orientation of the SPH UQ, core courses use material from the international, as well as local context, and thus are suitable for those interested in pursuing international/tropical specialisations.

**Introduction to Epidemiology PUBH7600**

This course covers sources of data on mortality and morbidity; measures of prevalence, incidence and risk; epidemiological study designs; chance, bias and confounding; association and causation; epidemic investigation; disease surveillance; screening; prevention; use of epidemiology in health services.

**Introduction to Biostatistics PUBH7630**

This course covers concepts of population and demographic change; sampling and sample selection; data collection, management and presentation; sampling variability and statistical inference including estimation, confidence-intervals, hypothesis testing and sample size calculation; statistical computing; planning and reporting statistical analyses.

**Social Perspectives in Population Health PUBH7620**

This course introduces students to the contribution of social science disciplines to the identification and solution of public health problems. It uses particular health problems, such as diabetes, cancer or HIV/AIDS, to examine individual and community issues and responses.

**Health Systems, Organisation and Management PUBH7614**

This course provides an overview of the social, cultural and political determinants of health care and major current issues in health care planning and management.

***DEFINING COURSES FOR MASTER OF INTERNATIONAL PUBLIC HEALTH (MIPH) AND MASTER OF PUBLIC HEALTH (TROPICAL )***

The defining courses for the MIPH are PUBH7100 and PUBH7113. For the MPH (Tropical) the defining courses are at least 2 from PUBH7107, PUBH7101, and PUBH7106. When not defining, these courses are available as electives for the MIPH, MPH(Trop) and MPH. The degrees can be completed by coursework, or coursework and Dissertation or Project.

**International Disease Control Priorities PUBH7100 - MIPH, MPH(Trop)**

This course covers: assessment of disease burden by cause; prevention and control of communicable and non-communicable disease and injuries. This includes causes and control of: malaria, TB, HIV/AIDS, under-nutrition, acute respiratory infection, diarrhoeal disease, vaccine preventable disease, cardiovascular disease, diabetes, injuries.

**Health and Development PUBH7113 – MIPH**

This course covers several themes aimed at providing students with an understanding of: the variety of conceptions of health and of development, and how they are measured; fundamentals of the demographic, epidemiological, and nutritional transitions and the bi-directional interactions between health and development; social, economic and cultural components of development and their specific interactions with disease and fertility in various ecological settings; conceptions of socio-economic status and poverty; a wide perspective on the determinants of health and disease and health improvement in the international context; and, an understanding of the organisations working in international health and their strengths and weaknesses.

**Infectious and Tropical Disease PUBH7101 - MPH(Trop)**

This course covers: vector-borne diseases - malaria, leishmaniasis, trypanosomiasis, onchocerciasis, plague, typhus, dengue, yellow fever, other arboviruses; and schistosomiasis, diarrhoea, dysentery, cholera, typhoid,

polio, rabies, SARS, ARI, leptospirosis, hookworm, ascaris, tetanus, viral hepatitis, smallpox, leprosy, meningitis, STI, TB, etc.

**Reproductive and Child Health PUBH7106 – MPH(Trop)**

This course covers: measurement of morbidity, mortality and disease burden due to child and reproductive health problems; management of pregnancy; labour and the post-partum period; primary health care; immunization; management of the common diseases of childhood; growth and nutrition.

***OTHER COURSES RELATED TO INTERNATIONAL AND TROPICAL HEALTH***

**International Health Aid Projects and Programs PUBH7108**

This course informs participants of the tendering processes of major international and donor agencies, and provides sufficient knowledge and skills to collaborate in the identification of and design of aid projects. Project design and write-up, including the use of log-frame planning matrices, will be modeled.

**International Health Policy PUBH7645**

International Health Policy identifies key stakeholders in international health and their roles, including WHO, World Bank, key NGO's and bilateral agencies and Global Public Private Partnerships. It explores major international health policy and program developments and the translation of those policies into practice.

**Nutrition in International Health NUTR7008**

Students will be able to describe the dramatic global changes experienced by many developing countries; how these affect food supply, food intake, nutrition and disease patterns and the impact of the double burden of under-nutrition and over-nutrition.

**Global HIV/AIDS Control PUBH7118**

This course covers: the global HIV/AIDS situation; family, community and societal effects; surveillance; modes of transmission and interventions to reduce transmission; determinants of risk behaviours and means to change; treatment of opportunistic infections and ARV; case studies of selected countries.

**Mortality Analysis PUBH7115**

This course broadens the disciplinary base in using various sources of demographic and mortality data (vital registration, censuses, surveys) to understand the health of populations, with a focus on understanding and applying demographic techniques to estimate mortality levels and patterns in developing countries.

**Burden of Disease Methods PUBH7616**

An intensive eight-day workshop that aims to equip students with the core skills to conduct a national burden of disease study and to understand the key determinants of population health. Good numerical skills and proficiency in Excel are required.

**Control of Non-Communicable Disease PUBH7612**

This course addresses the causes and control of cardiovascular disease, diabetes, cancer, chronic lung disease, mental disorders and injury which are responsible for considerable disease burden in developed, newly industrialised and middle income countries and increasing in many developing countries.

**Introduction to Injury Prevention and Control PUBH7670**

This course introduces students to the development of the public health approach to injury prevention and control. It provides an overview of injury epidemiology and strategies for injury prevention and the role of emergency services, acute care and rehabilitation medicine.

**Issues in Indigenous Health INDH7002**

Introduction to major issues currently being addressed in Aboriginal and Torres Strait Islander health with specific attention given to issues of concern to Aboriginal and Torres Strait Islander communities.

**Health Aspects of Disasters PUBH7117**

The short course will cover important thematic areas such as: types, phases and effects of disasters on health, nutrition and mortality; public health and medical responses; infectious disease and nutritional emergencies; pandemic scenarios; refugee camps; psychosocial effects; co-ordination of donor and aid agencies; and disaster preparedness.

**Communicable Disease Control PUBH7116**

The short course covers: (a) principles of communicable disease and control, communicable disease surveillance in populations, and outbreak investigation; and (b) the epidemiology and control of tuberculosis, influenza and respiratory infections, sexually transmitted and blood-borne (including HIV/Aids and Hepatitis B/C), vaccine preventable diseases, food and water-borne disease and vector-borne disease (dengue) in the Australian and developed country settings. Additionally, this course will consider aspects of bio security and biological warfare.

**TEACHING APPROACHES**

Teaching consists of lecture-discussions and small group presentations and discussions. Both structured and problem-based learning is employed. Lecture-discussions are from academic staff of the SPH, or from other Schools or Faculties at UQ, including the Centre for Military and Veterans Health (CMVH), or from external collaborating institutions such as QIMR (part of ACITHN), the Defence forces, Queensland and Federal Health Departments, consultancy organisations involved in international health activities, and other universities and institutes. All lecturers have direct experience in working in the international context with the aim to always involve the best people available who can teach the various topics.

Tutorials involve student-led discussions and student presentations, based on the content of the coursework, and are guided and commented upon by the tutor present. Student-led discussions are generally problem-based (especially public health problems in countries where students are from) in the early part of the Semester, and in the later part of the Semester student presentations (individual or group) will also be used for assessment.

Assessment is usually by more than one method. Examinations (for quantitative methods) and short answer quizzes are mixed with individual (or group) written assignments and group (or individual) class presentations on selected topics relevant to the coursework. More details concerning assessment are available in the course profiles at [www.uq.edu.au/study](http://www.uq.edu.au/study).

## **RESEARCH DISSERTATIONS AND PROJECTS**

The University of Queensland has a strong track record in assisting with Masters research dissertations, and projects based on international fieldwork, as part of coursework degrees. Students have traveled to a range of sites connected with UQ in the Asia Pacific region in order to conduct fieldwork, in groups and individually. Research Dissertations or Projects are optional.

### **Dissertation**

A Dissertation is a major research undertaking which is worth 1/3 of the credit points or units for the 24 unit degree; that is, 8 credit points (equivalent to 4 taught courses). Dissertations can only be undertaken as part of 24 unit (3 semesters) masters degrees. The desired standard of this work should be that of one or more publishable paper(s) or reports in the scientific or organisational literature. Based on a critical review of the literature, questions are posed, appropriate methodologies are designed, implementation (commensurate with the time and resources available) is specified, information is then collected, analyzed, and presented in a scholarly and scientific format.

Research dissertations can be undertaken in Australia or internationally and as individual or group activities. Selected group research activities outside Brisbane, or internationally, may be supported by a supervisory visit by an academic member of staff during the fieldwork, in addition to support with arrangements for making contacts and setting-up the research, and email and telephone contact. Dissertations are marked externally, as well as internally. A Masters by coursework with adequate grades (mean  $\geq 5/7$ ) and a Dissertation is a suitable qualification for PhD entry.

### **Project**

A Project is research or practice activity that is worth 4 credit points or units (equivalent to 2 taught courses). While a Project is half the credit points of a Dissertation, it could nevertheless be of publishable quality. However, a project could also involve: a critical review of the literature for the purposes of policy analysis; or a health situation analysis in a province or country as a guide to future action; or a research or project proposal; or a review of public health projects or programs in operation, as might be expected for a consultancy report; or an organizational assessment for students who may be seconded to international or aid agencies. Projects can be undertaken in Australia or internationally. Supervisory arrangements will depend on the circumstances. Project reports are assessed and graded.

### **Part-time options for local students**

Local students are able to complete the coursework over a longer period than 18 months and to be enrolled in less than 6 credit points in the March or July Semesters. Coursework degrees should usually be completed in 3 years part-time. Local students can change from full-time to part-time, and the reverse, in different Semesters. Core courses are taught in both the March and July Semesters and will be alternated between day and evening sessions in different Semesters. Electives taught once per year will be alternated day and evening in successive years. These arrangements allow students who can only attend in the evenings to access all courses over a 2 year cycle. Taught courses in the Summer Semester will be held in block/workshop mode.

## FACULTY

All Faculty involved in teaching the courses related to international and tropical health at SPH UQ have extensive and continuing international experience. This applies to academic members of the SPH and Faculty of Health Sciences, The University of Queensland, and also lecturers from other faculties, universities and institutions. SPH staff particularly experienced in International and Tropical Health are:

**Richard Taylor**, Professor of International Health is Head of the International and Indigenous Division in the SPH and is Director of the Centre for International and Tropical Health and Nutrition (ACITHN) which is a consortium of the Queensland Institute of Medical Research (QIMR) and Queensland Health. Professor Taylor has continuing international experience in the Asia Pacific, particularly in the Pacific Island region, but also in China, Mongolia and Vietnam, and has been involved in the epidemiology and disease control aspects of the health transition, especially concerning cardiovascular disease, diabetes and cancer. He also has experience in control of communicable and vector-borne disease. [r.taylor@sph.uq.edu.au](mailto:r.taylor@sph.uq.edu.au)



**Peter Hill**, Associate Professor in International Health Policy, is a public health physician with extensive experience in health services and policy and health sector reform. He has worked with the NGO sector in rural health in Nigeria and Cambodia, with the Northern Territory and Queensland government in Aboriginal health, for AusAID in Cambodia, Lao PDR, and Fiji and with the German Agency for Development Cooperation (GTZ) in Cambodia. His research interests in the development and implementation of international health policy have led to collaborations with WHO, and the Institute of Tropical Medicine, Antwerp. Peter is Head of the International and Tropical Health Unit and Chair of the School of Population Health Research Ethics Committee. [p.hill@sph.uq.edu.au](mailto:p.hill@sph.uq.edu.au)



**Geoff Marks**, Associate Professor in Nutrition and Head of the School's Nutrition Program. He is a nutritional epidemiologist with particular experience in nutritional surveillance and evaluation of public health nutrition interventions, including through professional postings, research, teaching, consultancy and advisory positions. The primary focus of his work has been on addressing nutrition issues through nutrition policy and programming, with a current focus on understanding and responding to the nutrition transition that is occurring in most countries of the region. He has been involved with projects throughout the Asia-Pacific region, with principal areas of experience being Australia, Indonesia, Papua New Guinea and the USA. [G.marks@sph.uq.edu.au](mailto:G.marks@sph.uq.edu.au)



**Gail Williams**, Professor of International Health Statistics. Professor Williams has extensive experience in the collection and analysis of epidemiological data from countries in the Asia/Pacific region, including China (schistosomiasis), Philippines (acute respiratory infections) and Papua New Guinea. Professor Williams has particular expertise in the design and analysis of longitudinal studies and intervention trials as well as in infectious disease epidemiology and statistical modeling of communicable disease. Other areas of interest include child health, women's health, ageing and end-of life issues, and the health effects of air pollution. [g.williams@uq.edu.au](mailto:g.williams@uq.edu.au)

**Megan Jennaway** is a medical anthropologist specialising in the socio-cultural aspects of health and illness in South and South East Asia, particularly Indonesia. She has written widely on Indonesian/Balinese medical and social systems, based upon ethnographic fieldwork she undertook in Bali in the early 1990s. Her research focussed particularly on women's reproductive health in the Balinese context and her book, *Sisters and Lovers: Women and*



*Desire in Bali*, was published by Rowman and Littlefield in 2002. More recently, Dr Jennaway has been involved with community development programs run by UNESCO in Nepal, Bangladesh, Sri Lanka, India, and Bappenas and UNDP in Indonesia (which aims to install telecentres throughout the archipelago). [m.jennaway@sph.uq.edu.au](mailto:m.jennaway@sph.uq.edu.au)

**Theo Vos** is the Director of the School's Centre for Burden of Disease and Cost-Effectiveness. The Centre provides training and advice to researchers in Australia and internationally who are carrying out burden of disease and economic evaluation studies aimed at providing policy makers with the evidence base for resource allocation decision making. In Australia, the Centre is responsible for an update of the Australian Burden of Disease study including, for the first time, an Indigenous burden of disease component. Associate Professor Vos is also leading a five-year project in collaboration with the University of Melbourne to carry out a comprehensive cost-effectiveness modelling study ('ACE-Prevention') into 100 preventive intervention options to reduce the burden of non-communicable disease. The Centre provides support to burden of disease study teams in many countries, including Thailand, Singapore, Malaysia, Vietnam, South Africa and Turkey. The Setting Priorities based on Information of Cost-Effectiveness (SPICE) project is a collaborative effort between the Ministry of Public Health in Thailand and the Centre and aims to provide information on the cost-effectiveness of interventions for mental disorders, road traffic accidents, HIV/AIDS and tuberculosis, and cardiovascular disease. [t.vos@sph.uq.edu.au](mailto:t.vos@sph.uq.edu.au)



**Chalapati Rao**, Lecturer and international mortality researcher, joined the School of Population Health in April 2003. Since then, he has continued a research agenda emanating from his experiences at WHO Geneva, as a member of the Global Burden of Disease Study Team. Dr Rao currently works with several countries in the Asia-Pacific and Middle East regions in conducting research to strengthen national mortality registration systems. Specific research experience and interests include the evaluation of national cause of death statistics, developing and implementing cost effective methods to collect mortality data, and exploring relationships between levels and causes of mortality. Dr Rao is involved in MPH teaching programs as well as offshore international teaching activities related to his research projects. [c.rao@sph.uq.edu.au](mailto:c.rao@sph.uq.edu.au)



**Chris Doran** is the lead health economist at the School's Centre for Burden of Disease and Cost-Effectiveness. Associate Professor Doran's main duties within this Centre include the identification of cost-effective interventions to alleviate the burden of disease in Australia and internationally, in particular the South-Pacific, where has worked closely with several Ministries of Health in reducing the disease burden from several risk factors. He is also the co-ordinator of postgraduate research in Health Economics at the University of Queensland. Before relocating to Queensland, Associate Professor Doran was based at the National Drug and Alcohol Research Centre, University of New South Wales, where he was the principal health economist on the National Evaluation of Pharmacotherapies for Opioid Dependence. [c.doran@sph.uq.edu.au](mailto:c.doran@sph.uq.edu.au)

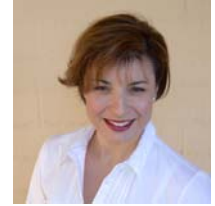


**Stephen Begg** is a lecturer specializing in descriptive epidemiology and teaches courses on epidemiology, population health, burden of disease methods and mortality analysis. Stephen co-ordinates a program of research aimed at identifying opportunities for health gain and works in close collaboration with the Public Health Services Branch of Queensland Health. Prior to moving to Brisbane, Stephen worked at different times for the World Health Organization (Geneva), the Harvard School of Public Health (Cambridge, Mass) and the Victorian Department of Human Services (Melbourne). He has extensive experience measuring health determinants and outcomes at both national (e.g. Australia, USA, Thailand, Malaysia, Fiji, Turkey and Singapore) and global



levels. Stephen is interested in research relating to more complete descriptions of population health and is lead author of the May 2007 AIHW publication “Burden of disease and injury in Australia, 2003” [www.aihw.gov.au/bod](http://www.aihw.gov.au/bod) [s.begg@sph.uq.edu.au](mailto:s.begg@sph.uq.edu.au)

**Fernanda Claudio** is a social anthropologist specialising in Southern Africa. Fernanda has lectured in a number of courses, including Health Aspects of Disaster, Health Systems, Policy and Planning, Health and Development and was the Coordinator for Applied Research and Practice in second semester 2007. She has researched the impact of states and international organisations on local level political and economic structures. Specifically, her fieldwork has addressed the relationship between development schemes, drought, and hunger in northern Zimbabwe. In the past, she has also worked on Portuguese migration to Canada, and participated in a study of culture and the clinical encounter in primary health care in Montreal. Fernanda was born in Portugal, grew up in Canada, was educated at the London School of Economics, and now calls Queensland home. Continuing research interests include political structures and health inequality, famine, and disaster. [f.claudio@uq.edu.au](mailto:f.claudio@uq.edu.au)



**Zoë Dawkins** is an applied anthropologist, working with the School of Population Health to support the implementation of the Evidence for Health Policy in Vietnam Project. Zoë has research experience in Vietnam, where she conducted a social impact assessment of donor-funded aid projects, using a narrative evaluation technique. Zoë’s work experience has included consultancy, project management and research experience in China, Fiji, India, Papua New Guinea and Vietnam. Her research interests include Arts and Culture in Development, and health and development in indigenous communities. Zoë’s appointment to the University of Queensland is functioning as an institutional collaboration with JTA International – an international health consulting and project

management firm operating in the Asia-Pacific region – where she is employed on a part-time basis as the Project Design and Evaluation Associate.

**Kurt Long** is a human population biologist with extensive experience working on issues of child health and nutrition in developing countries. Before joining the Nutrition Unit, he worked at the National Institute of Public Health in Mexico and the Harvard School of Public Health. While in Mexico he began a series of clinical trials in conjunction with the National Vaccine Council, a sub-secretariat of the Ministry of Health, concerned with defining what immunological and physiological mechanisms underlie the impact micronutrient supplementation has on infectious disease morbidity and growth among children. He is now developing projects concerned with how changing associations between micronutrient deficiencies, infectious diseases and inflammatory markers relate to trends in nutrition and health in countries passing through the epidemiological transition. These projects are especially concerned with the impact of nutrition on body composition among young children and the development of obesity in rural areas of Mexico.



**Bronwen Blake** has primary responsibility for the coordination of teaching of PUBH7117 Health Aspects of Disasters and PUBH7116 Communicable Disease control. With a background in nursing, she has extensive experience in international health, having worked with Médecins Sans Frontières (MSF) in complex disaster situations in Africa, predominantly Uganda and southern Sudan, and communicable disease outbreak response including Ebola, Sleeping Sickness and Cholera programs. She has also been involved in emergency preparedness and situation analysis and the provision of health services to displaced populations. She has experiences working in The Middle East and Primary Health Care, micro finance and nutritional programs in

India. She has coordinated short courses in Public Health in Complex Emergencies and Refugee Health at the University of Sydney and James Cook University.

**Susan Krimmer** develops and manages international health research and development projects in collaboration with UniQuest, the commercial arm of University of Queensland. Susan's role includes working with the UQ School of Population Health and the Faculty of Health Sciences to promote university skills in international health projects. The development of this sector will be through opportunities sought from overseas development assistance organizations (such as AusAid) international agencies (such as WHO) and philanthropic foundations. Susan has over fifteen years experience in health and social services, and has worked on a diverse range of local, state, national and international health and disability projects, including the prevention of HIV/AIDS and drug abuse. Susan originally trained as a general nurse at the Royal Brisbane Hospital and worked in the Haematology Unit there after graduating as a registered nurse. Susan has worked with UNICEF, UNAIDS and UNDP in Vietnam, the Australian Government Department of Health and Ageing, Queensland Health, the NSW Department of Ageing, Disability and Home Care; Disability Services Queensland, National Breast Cancer Centre, Queensland Cancer Council and the Leukaemia Foundation.



**Andrew Valley** is Senior Lecturer in Tropical and Infectious Diseases at the School of Population Health, University of Queensland. Andrew joined SPH in March 2007 after working in HIV care and prevention in East Africa for over 6 years. He has also been a District Medical Officer in Papua New Guinea (1995-8) and has coordinated participatory health needs assessment among refugee communities in London (1998-9). Andrew coordinated the Microbicides Development Programme feasibility study and phase III vaginal microbicide trial in Mwanza, northern Tanzania 2002-07 and remains actively involved with the site as a Co-Investigator. He is also a Co-Principal Investigator on a nested qualitative study that is exploring barriers to antiretroviral access among women diagnosed as HIV positive at screening or during trial follow-up. His current research interests are HIV prevention trials among transactional and commercial sex workers; the use of participatory action-orientated research in clinical trials among vulnerable study populations; and the impact of malaria on maternal and child health. Andrew is coordinating the Infectious and Tropical Diseases Course (PUBH7101) and assisting Megan Jennaway to coordinate the Global perspectives on HIV/AIDS Course (PUBH7118) in second semester 2007.



**Karen Carter** is a research officer in the International Mortality and Health Metrics Unit of the School of Population Health. Having arrived at the school in 2007 from several years working in health surveillance in Micronesia, Karen has a strong interest in the Pacific and is currently working on a project investigating mortality and cause of death in that region. Karen has a background in environmental health, infectious disease surveillance systems, and outbreak investigation and control, and spent several years working in the Communicable Diseases Section of the Victorian Department of Human Services before heading overseas. She holds a Bachelors Degree in Applied Science (Environmental Health) from UWS and a Masters Degree in Public Health and Tropical Medicine from James Cook University.



**Tim Adair** is Senior Research Fellow in the International Mortality and Health Metrics Unit. He obtained his PhD in Demography from The Australian National University in 2006; his thesis analysed inequalities in under-five mortality risk in the Indonesian mega-urban regions of Jabotabek, Bandung and Surabaya. Before joining SPH, Tim was a Postdoctoral Fellow with the Measure DHS project at Macro International in the USA where his work utilised Demographic and Health Survey data relating to HIV/AIDS. His main research interests include the measurement and analysis of mortality, especially in Southeast Asia.

**Alan Lopez**, Professor of Medical Statistics and Population Health, is Head of the School of Population Health at The University of Queensland. He is also a consultant to WHO, where, prior to joining UQ, he worked for 22 years in various technical and senior managerial posts. Professor Lopez has published widely on mortality analysis and causes of death, including the impact of the global tobacco epidemic, and on the global descriptive epidemiology of major diseases, injuries and risk factors. He is the co-author of the seminal *Global Burden of Disease Study* (1996) which has greatly influenced debates about priority setting and resource allocation in health. He has been awarded major research grants in population health in recognition of his research competence and is a member of Australia's National Health and Medical Research Council Program Grants Committee.



[a.lopez@sph.uq.edu.au](mailto:a.lopez@sph.uq.edu.au)

## STUDENTS

Students are drawn from a wide variety of countries to study at the School of Population Health. In South East Asia and the Pacific students come from Indonesia, Thailand and Vietnam as well as the Pacific Islands; elsewhere in Asia students come from Bangladesh, Singapore and Japan. Further afield students come from a number of African, Middle Eastern and South American countries.

The background of students is quite varied. As well as doctors, nurses, dentists, nutritionists and pharmacists, there are health managers and planners, educators and researchers. Also there are project officers from non-government organizations (NGOs) and representatives from pharmaceutical companies and occasionally journalists, geologists and lawyers.

After graduation many students work with departments and ministries of health either in their own country or elsewhere. Others go on to work with international organisations such as World Health Organization (WHO), and with NGOs such as Red Cross and *Medicines sans frontieres*; others find employment with consultancy companies who plan and implement projects on behalf of government aid agencies such as AusAID.

## SPH FACILITIES

The School of Population Health is located in the Public Health Building which is a modern fully air-conditioned facility of five levels. A computer room with 24 hour student access is available. The School of Population Health is adjacent to the Medical School and close to the Royal Brisbane Hospital, Women's Hospital and Children's Hospital and Herston Medical Library. Students have access to extensive on-line databases through the University of Queensland library system, and to email, web searching and common word-processing, spreadsheet and statistical software. Although computer and printing facilities are available, students are strongly encouraged to have their own computer and printer.

## RESEARCH DEGREES

Entry to research degrees generally require an undergraduate honours degree at the level of I-IIA, or a Masters coursework degree with adequate grades (mean  $\geq 5/7$ ) and at least 25% by research dissertation or treatise.

A Masters by research is available which leads to the degree of **Master of Philosophy in Public Health** (M Phil PH). This degree involves the equivalent of 3 Semesters or 24 credit points (units) research (over 12 or 18 months), and may include selected coursework relevant to the research. An international or tropical health topic may be selected for the research.

**Doctor of Philosophy (PhD)** research degrees are available and research may include international and tropical health topics. PhD degrees may also include optional and selected coursework relevant to the research.

## **ADMISSION REQUIREMENTS FOR MASTERS COURSES**

### **24 unit (3 semester) Masters**

Students must hold:

- A tertiary degree approved by The University of Queensland;
- OR a basic professional qualification in the field of health, behavioural, social, agricultural or biological sciences, and have completed work experience or further training in a relevant field, and obtain approval of the Executive Dean
- OR hold the Graduate Diploma in Public Health from the University of Queensland.

### **16 unit (2 semester) Masters**

Students must hold:

- A 4 year or more tertiary degree or equivalent approved by The University of Queensland in a related field.

### **English requirements**

International applicants must have an IELTS overall score of 6.5 unless English was the medium of instruction at secondary and tertiary levels of education.

### **Credits or Exemptions**

Applicants with demonstrated prior knowledge from previous qualifications may apply for Credit, where the course will appear on the transcript, or Exemption from a required courses, where the course will not appear on the transcript and another course is taken instead. Courses not undertaken because of Credit or Exemption are not charged. Request for Credit or Exemption are assessed individually by Program/Plan and course co-ordinators.

### **FEES 2008**

*A [Fee Calculator](#) is available for calculation of fees based on course selection. The indicative fees quoted below for degree programs are based on courses provided through the School of Population Health. These fees apply for 2008. See: [www.uq.edu.au/study/index.html?page=947](http://www.uq.edu.au/study/index.html?page=947)*

### **Local students 2008**

For local students, fees for the MIPH, MPH(Trop) and MPH for full-time and part-time students are Aus\$ 769 per credit point or Aus\$ 18,450 in total for a 24 unit Masters and Aus\$ 12,300 for a 16 unit Masters. Fees are due early in each semester and depend on the number of courses enrolled. Fees may be tax deductible.

UQ scholarship information for domestic students can be found at:

<http://www.uq.edu.au/study/index.html?page=23914&pid=1135>

Study in Australia scholarship information can be found at:

<http://studyinaustralia.gov.au/Sia/en/CourseSearch/ScholarshipSearch.htm>

Fees study assistance information can be found at:

<http://www.uq.edu.au/study/index.html?page=4360&pid=1123>

Under FEE-HELP, for Australian citizens or holders of a permanent humanitarian visa, the Federal Government pays the loan amount directly to the University. Recipients then repay the loan through the taxation system once income reaches the minimum threshold for compulsory repayment.

### **International students 2008**

For international students, fees for the MIPH, MPH(Trop) and MPH are A\$1282 per credit point or Aus\$ 30,750 in total for the 24 unit Masters and Aus\$ 20,500 for the 16 unit Masters. Fees are due early in each semester and depend on the number of courses enrolled.

UQ scholarship information for international students can be found at:

<http://www.uq.edu.au/study/index.html?page=37210&pid=1135>

### **FIELDWORK EXPENSES**

Students are responsible for fieldwork expenses including travel, accommodation and subsistence. Scholarship holders may have fieldwork expenses included in their package. Subsidisation of fieldwork expenses may be possible if related to funded consultancy or research activities of SPH.

### **LIVING IN BRISBANE**

Following are a number of useful links containing information on living in Brisbane and University details of Accommodation available on campus:

Living in Brisbane <http://www.uq.edu.au/international/?page=10367>

UQ Accommodation Service <http://www.accommodation.uq.edu.au/?action=sitemap>

### **ENQUIRIES**

#### **Enrolment queries and advice**

Student Services Unit

School of Population Health

Public Health Building, Herston Rd., Herston, Brisbane, Queensland, 4006, Australia.

Program Support Officer – Laurelle Roberts

Tel +61 07 3365 5309 Fax +61 7 3365 5442

Email: [l.roberts@uq.edu.au](mailto:l.roberts@uq.edu.au)

#### **Enquiries concerning course content and career advice**

Richard Taylor

Professor of International Health

Public Health Building, Herston Rd., Herston, Brisbane, Queensland, 4006, Australia.

Telephone: +61 07 33655395 Fax: +61 07 33655599

Email: [r.taylor@sph.uq.edu.au](mailto:r.taylor@sph.uq.edu.au)

**Master of International Public Health and related courses 2008**

Course name	Credit Points	Course code	March Semester (Mar-Jun)	July Semester (Jul-Oct)	Summer Semester (Nov-Feb)
<b>Core courses (8 credit points)</b>					
Introduction to Epidemiology	2	PUBH7600	×	×	
Introduction to Biostatistics	2	PUBH7630	×	×	
Social Perspectives in Population Health	2	PUBH7620	×	×	
Health Systems, Organization & Management	2	PUBH7614	×	×	
<b>International Program defining courses (4 credit points)</b>					
International Disease Control Priorities	2	PUBH7100		×	
Health and Development	2	PUBH7113	×		
<b>International elective courses (&gt;= 6 units for 24 unit Masters and &gt;=2 units for 16 unit Masters )</b>					
Infectious & Tropical Disease	2	PUBH7101		×	
Reproductive & Child Health	2	PUBH7106	×		
International Health Aid Projects & Programs	2	PUBH7108		×	
Tropical Medicine	2	PUBH7112			×
Mortality Analysis	2	PUBH7115		×	
Health Aspects of Disasters	2	PUBH7117			×
Global Perspective on HIV/AIDS	2	PUBH7118		×	
Control of Non Communicable Disease	2	PUBH7612		×	
Burden of Disease Methods	2	PUBH7616			×
International Health Policy	2	PUBH7645	×		
Nutrition in International Health	2	NUTR7008		×	
Communicable Disease Control	2	PUBH7116		×	
Project	4	PUBH7900/01	×	×	×
Dissertation (24 unit Masters only)	8	PUBH7950/55/57	×	×	
<b>Elective courses in other subject areas</b>					
Nutrition	All 2 credit point courses Available in various semesters See full course list				
Health Promotion					
Health Economic					
Health Systems and Management					
Tobacco, Alcohol and Drug Abuse					
Social Science and Psychosocial					
Health Systems and Policy					
Epidemiology and Biostatistics					
Disease Control Electives					
Indigenous Health electives					

Core courses include international material and examples.

Most taught courses in the Summer Semester are held in Nov-Dec in block/workshop mode.

Maximum units in March and July Semesters =10; maximum units in Summer Semester = 6.

**Master of Public Health (Tropical)  
Schedule of courses 2008**

Course name	Credit Points	Course code	March Semester (Mar-Jun)	July Semester (Jul-Oct)	Summer Semester (Nov-Feb)
<b>Core courses (8 credit points)</b>					
Introduction to Epidemiology	2	PUBH7600	×	×	
Introduction to Biostatistics	2	PUBH7630	×	×	
Social Perspectives in Population Health	2	PUBH7620	×	×	
Health Systems, Organization & Management	2	PUBH7614	×	×	
<b>Tropical Plan defining courses (at least 4 units)</b>					
International Disease Control Priorities	2	PUBH7100		×	
Reproductive & Child Health	2	PUBH7106	×		
Infectious & Tropical Disease	2	PUBH7101		×	
<b>International elective courses (at least 6 units for 24 unit Masters)</b>					
Health and Development	2	PUBH7113	×		
Issues in Indigenous Health	2	INDH7002			
International Health Aid Projects & Programs	2	PUBH7108		×	
Tropical Medicine	2	PUBH7112			×
Mortality Analysis	2	PUBH7115		×	
Health Aspects of Disasters	2	PUBH7117			×
Global Perspective in HIV/AIDS	2	PUBH7118		×	
Control of Non Communicable Disease	2	PUBH7612		×	
International Health Policy	2	PUBH7645	×		
Nutrition in International Health	2	NUTR7008		×	
Communicable Disease Control	2	PUBH7116		×	
Project	4	PUBH7900/01	×	×	×
Dissertation (only for 24 unit masters)	8	PUBH7950/55/57	×	×	
<b>Elective courses in other subject areas</b>					
Nutrition	All 2 credit point courses Available in various semesters See full course list				
Health Promotion					
Health Economic					
Health Systems and Management					
Tobacco, Alcohol and Drug Abuse					
Social Science and Psychosocial					
Health Systems and Policy					
Epidemiology and Biostatistics					
Disease Control Electives					
Indigenous Health electives					

Core courses include international material and examples.

Most taught courses in the Summer Semester are held in Nov-Dec in block/workshop mode.

Maximum units in March and July Semesters =10; maximum units in Summer Semester = 6.

**Master of Public Health (Standard)****Schedule of courses with international and tropical options 2008**

Course name	Credit points	Course code	March Semester (Mar-Jun)	July Semester (Jul-Oct)	Summer Semester (Nov-Feb)
<b>Core courses (10 credit points)</b>					
Introduction to Epidemiology	2	PUBH7600	×	×	
Introduction to Biostatistics	2	PUBH7630	×	×	
Social Perspectives in Population Health	2	PUBH7620	×	×	
Health Systems, Organization & Management	2	PUBH7614	×	×	
Applied Research and Practice	2	PUBH7610		×	
<b>MPH standard elective courses (at least 6 credit points)</b>					
International Disease Control Priorities	2	PUBH7100		×	
Culture & Health	2	HPRM 7010	×		
Mental Health Promotion	2	HPRM7008		×	
Issues in Indigenous Health	2	INDH7002	×		
Indigenous Health Practice	2	INDH7003	×		
Indigenous Health Policy	2	INDH7004		×	
Nutrition and Health	2	NUTR7001	×		
Nutritional Assessment	2	NUTR7002		×	
Nutrition Policies & Programs	2	NUTR7003		×	
Evaluation in Health	2	PUBH7006		×	
Delivering Health Care in Communities	2	PUBH7012	×		
Health Policy & Financing	2	PUBH7014		×	
Qualitative Methods in Health		PUBH7003		×	
Communicable Disease Control	2	PUBH7116		×	
Health Behaviour Interventions: Concepts & Applications	2	PUBH7122		×	
Determinants of Health Behaviours	2	PUBH7123	×		
Principles of Epidemiology	2	PUBH7611	×		
Statistical Modeling	2	PUBH7631		×	
Statistical Issues in Study Design	2	PUBH7632	×		
Evidence Based Health Care	2	PUBH7650	×		
Systematic Reviews of Evidence	2	PUBH7651		×	
Injury Prevention & Control	2	PUBH7670	×		
Control of Non Communicable Disease	2	PUBH7612		×	
Burden of Disease Methods	2	PUBH7616			×
Ethics in Health	2	PUBH7125	×		
Pharmacoeconomics		PUBH7617		×	
Project	4	PUBH7900/01	×	×	×
Dissertation	8	PUBH7950/55/57	×	×	

See continuation next page:

Core courses include international material and examples.

Most taught courses in the Summer Semester are held in Nov-Dec in block/workshop mode.

Maximum credits in March and July Semesters =10; maximum credits in Summer Semester = 6

Credit points = units.

**Master of Public Health****Schedule of courses with international and tropical options 2008** (continued)

Course name	Credit points	Course code	March Semester (Mar-Jun)	July Semester (Jul-Oct)	Summer Semester (Nov-Feb)
<b>Other Elective courses</b> (up to 8 credit points)					
<b>Electives related to international and tropical health</b>					
Health and Development	2	PUBH7113	×		
Infectious & Tropical Disease	2	PUBH7101		×	
Reproductive & Child Health	2	PUBH7106	×		
International Health Aid Projects & Program	2	PUBH7108		×	
Tropical Medicine	2	PUBH7112			×
Mortality Analysis	2	PUBH7115		×	
Health Aspects of Disasters	2	PUBH7117			×
Global HIV/AIDS Control	2	PUBH7118		×	
Burden of Disease Methods	2	PUBH7616			×
International Health Policy	2	PUBH7645	×		
Nutrition in International Health	2	NUTR7008		×	
Communicable Disease Control	2	PUBH7116		×	
Mortality Analysis	2	PUBH7115		×	
<b>Electives in other subject areas</b>					
Nutrition	All 2 credit point courses Available in various semesters See full course list				
Health Economics					
Tobacco, Alcohol and Drug Abuse					
Social Science & Psychosocial					
Indigenous Health					

Most taught courses in the Summer Semester are held in Nov-Dec in block/workshop mode.

Maximum credits in March and July Semesters =10; maximum credits in Summer Semester = 6

Credit points = units.